



## Ford Bronco 2021 - Current Front Bumper

Version 1.0AJS

These instructions are for a 2021 Ford Bronco 2.7 with a Modular Bumper. Other trims that have items such as the Capable Bumper or 2.3L engine, may have slightly variations to the removal of the stock bumper.

### Outline of Install

1. Removal of Modular Bumper & Bash Plate
  2. Vehicle Prep for SVC Bumper Install
  3. Installation of New Bumper
- Optional:
4. Relocation of Adaptive Cruise Control System
  5. Removal & Assembly of Parking Sensors

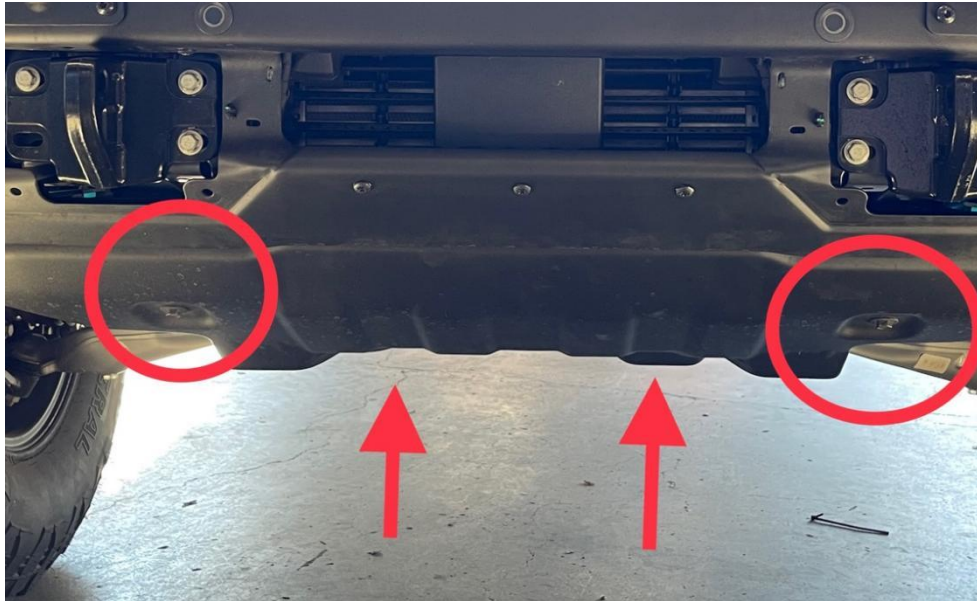
### Additional Points

- Its recommended to read the instructions thoroughly before performing any work.
- Park the vehicle on flat level ground, Set the emergency brake, and disconnect the negative battery terminal.
- Estimated time of install is 1.5 hours for bumper, and an additional 0.5 hours for the parking sensor. Adaptive cruise control relocation is estimated at 1.0 hours.
- Having a second set of hands available is recommended for best practices.



### Section 1: Removal of Modular Bumper & Bash Plate

1. Remove 15mm bolts (2) securing the bash guard to the modular bumper and frame. Remove 15mm (2) bolts securing the bash guard to intermediate skid plate.



2. Remove the plastic trim panels that cover to expose the bumper attachment bolts. (4 Plastic panel clips each side), pry off with panel tool or pull backwards on each side.



3. Disconnect wiring harness



4. Remove 15 mm frame bolts (6) connecting bumper to frame horns, and remove the bumper.

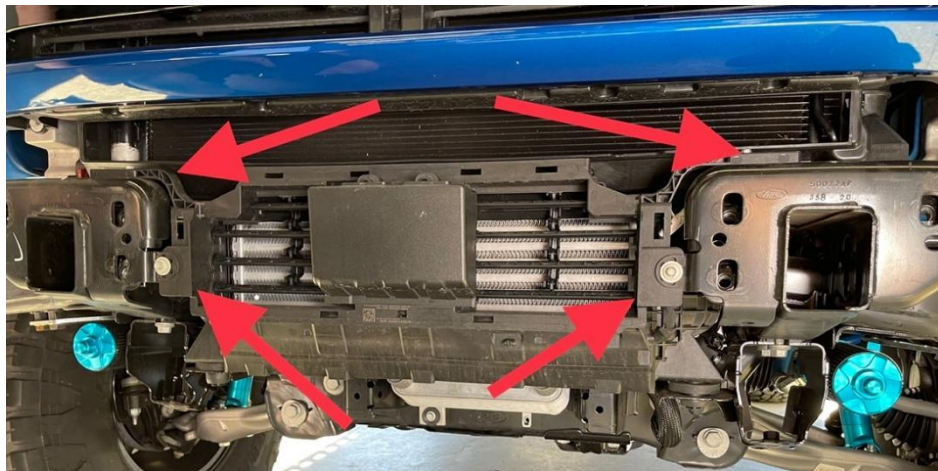


## Section 2: Vehicle Prep for SVC Bumper Install

1. Remove Intercooler Shroud & Assembly
  - a. Disconnect intercooler shroud assembly.



- b. Remove Plastic intercooler shroud and assembly 10mm bolts (4): 2 top and 2 front. Now would be the time to paint the intercooler if desired.
      - i. Note: **If present**, the black plastic box is a radar sensor for the adaptive cruise control, and should be handled with care. This will be retained and relocated later if desired.



- Trim intermediate skid plate as shown.



- 2.7 Engines or vehicles equipped with a transmission cooler will need to trim the bracket as shown below on the driver's side.





### Section 3: Installation of New Bumper

1. Secure bumper loosely to frame horns with stock 15mm bolts/ hardware (6). Install intermediate skid plate over the lower support bracket with stock 15mm bolts (4), securing the skid on top of the bumper support bracket. Next align bumper checking gaps and valance clearance. Secure all bolts once aligned.



Note: Bolts may be trimmed to ease installation.

2. Reconnect any harnesses if they were present before, i.e parking sensors or fog lights if retained.
3. Install skid plate by installing retaining clips (4), and supplied bolts (4).



4. Reconnect negative battery terminal. Add your lights if desired, and enjoy your new SVC Bumper!

#### Section 4: Relocation of Adaptive Cruise Control System

1. Remove Front Grill
  - a. Open hood, and remove clips for on radiator shroud and remove (9).
  - b. Remove 8mm bolts that hold the inner grill (4). (2 each side)
  - c. If front facing camera is present: disconnect the water connector (black) by squeezing both sides together and pulling. The camera harness (black) is a standard clip.



- d. Remove grill by pulling on each side straight out.
2. Remove top 4 drivers side Radiator Louvers (fins)
  - a. Method A (quick removal)
    - i. Push down on the louver, while pulling out. Take care around ac condenser and its fins. Using of a piece of cardboard placed in front of them would be a good form of protection.

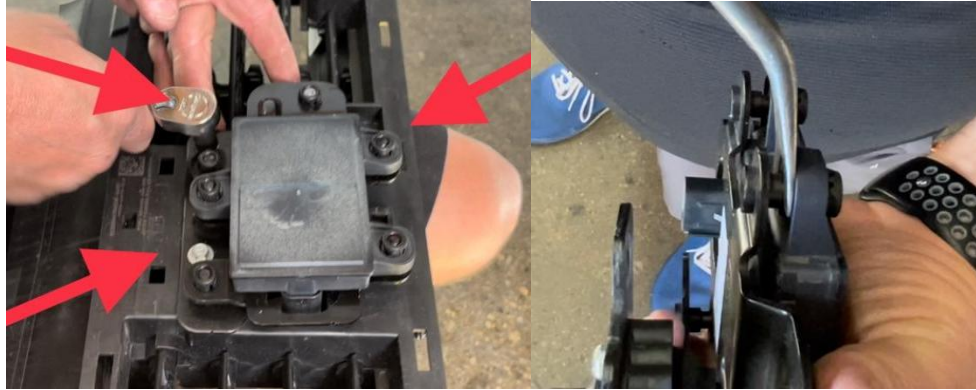


- b. Method B (Proper Removal)
  - i. Remove plastic fender by flipping the 5 latches down and pulling the plastic fender straight out and pulling off.
  - ii. Remove front valance by pulling it off. This is held in place by body clips, no tools required.
  - iii. Remove both Headlights: Remove on each light 2 top and 1 bottom screw, as well as the inner body clip.
  - iv. Remove inner grill by removing 4 bolts, two are visible in front and the two are below where valance was present.
  - v. Use flat head screwdriver to pry out one side of the fins on inner grill. This will release opposite side.
  - vi. Reinstall inner fender without louvers (fins) in reverse order above.
3. Removal of adaptive cruise control harness and sensor
  - a. Remove plastic cover





- b. Remove 3 bracket bolt and separate from shroud. The disconnect sensor from harness and separate sensor from bracket.



- c. Remove 3 gromets from sensor by pushing from front and prying tabs on the back.



- d. Remove wiring harness from intercooler shroud



- e. Reinstall harness by passing it from by the front of the battery, and exiting by the original harness connector. Reconnecting to factory main harness. Then re-route the remaining harness along radiator and pass sensor connector to into the inner grill section with the removed louvers/ fins.





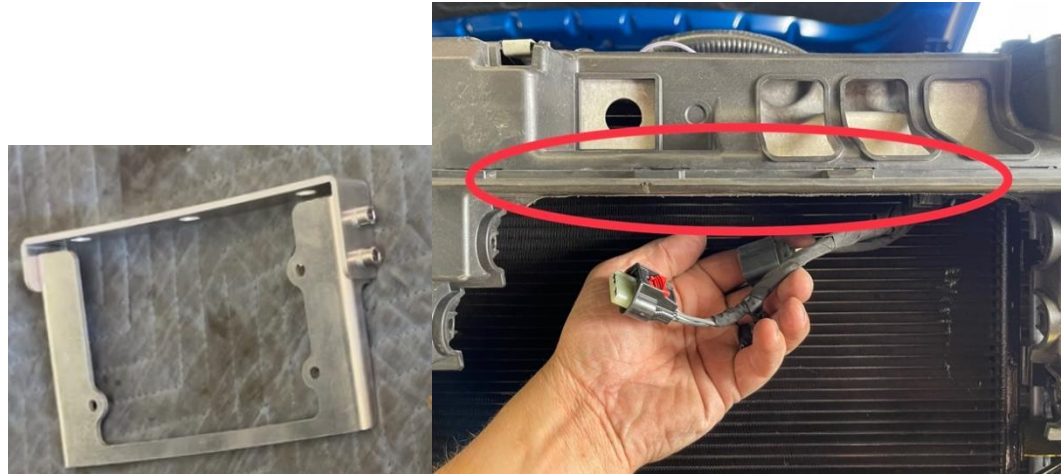
Ford Bronco 2021 - Current  
Front Bumper

Version 1.0AJS



4. Installation of relocation bracket & sensor

- a. Assemble relocation bracket as shown with supplier hardware. Then prep inner grill by barrel sanding the lower lip of the inner grill for a smooth mounting surface.



- b. Fit the bracket as desired, mark, drill and install with supplied hardware. Then install sensor onto the bracket with supplier hardware & connect to harness.



Note: Do your best to aim the sensor to the middle of the road and level. This will prevent any false reads from other lanes.

- c. Reinstall grill and radiator trim pieces in reverse order, and then proceed to installation of bumper in section 3.

### Section 5: Removal & Assembly of Parking Sensors

1. On the modular bumper, remove the bolts on each side holding the support bracket to the bumper (8 total). Next remove all the T40 Plus (Bronco Bolts) holding the inner supports to the modular bumper, and remove the support. This will expose the wire harness.



2. Disconnect and remove sensors wiring harness. Remove sensor from plastic retainers by spreading the clip as shown on the backside, and press from the front to the back to remove the sensor. Remove black plastic sensor trim, by pressing the top and bottom tabs on the back side of the bumper, and pushing out of the bumper by pushing back to front. Use of screw driver hand be helpful.

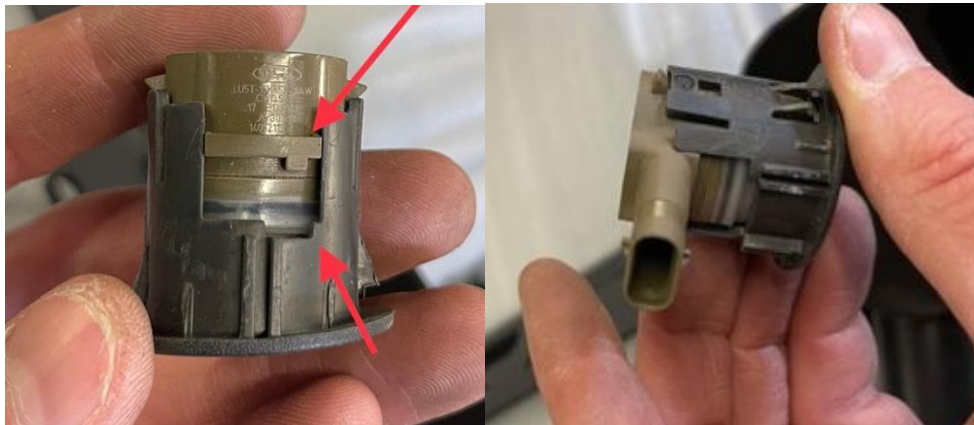




3. Install back plastic sensor trim pieces into new bumper. Take note of the correct orientation for proper fitment, the small tab on the side indexes into the small tab on the bumper.



4. Install sensor into plastic trim pieces. Take note, the sensors fit into the black trim pieces in a specific orientation.



5. Connect wiring harness to sensors. Then proceed to next steps to install the bumper in section 3.

